



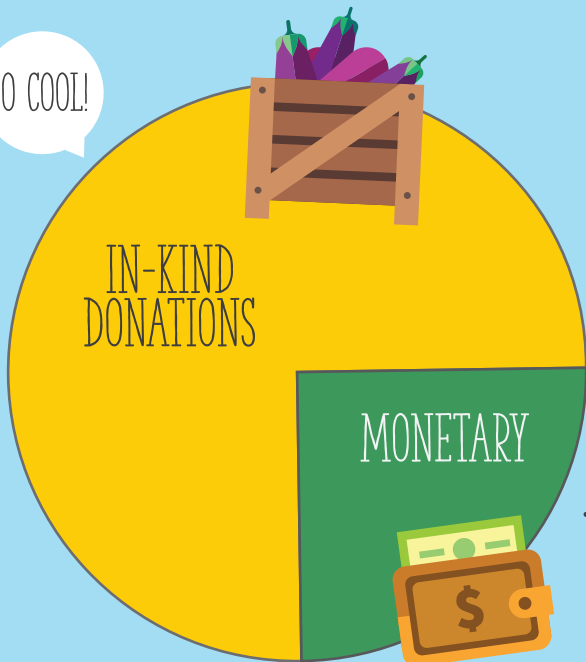
IMPACT REPORT  
2016-2017



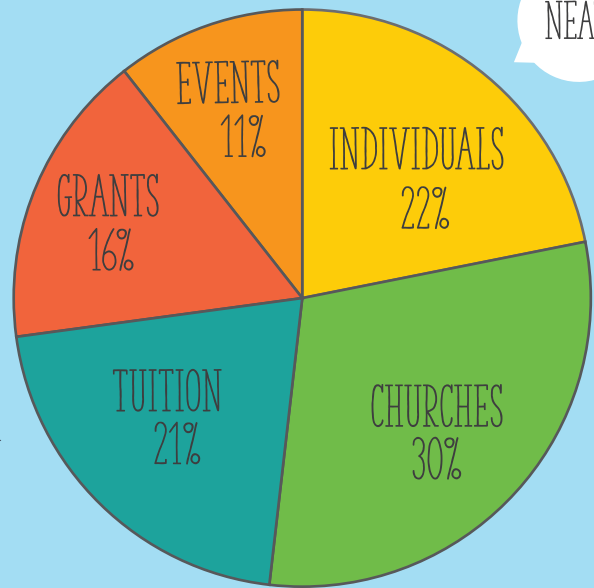
# COMMUNITY SUPPORT

Families Unlimited Network exists thanks to a diverse and important group of dedicated individuals, businesses, donors, and volunteers. Between July 2016 - June 2017, we raised **\$1,117,000** in support to help our local community. **Only 7% went to administrative Expenses.**

SO COOL!



NEAT!

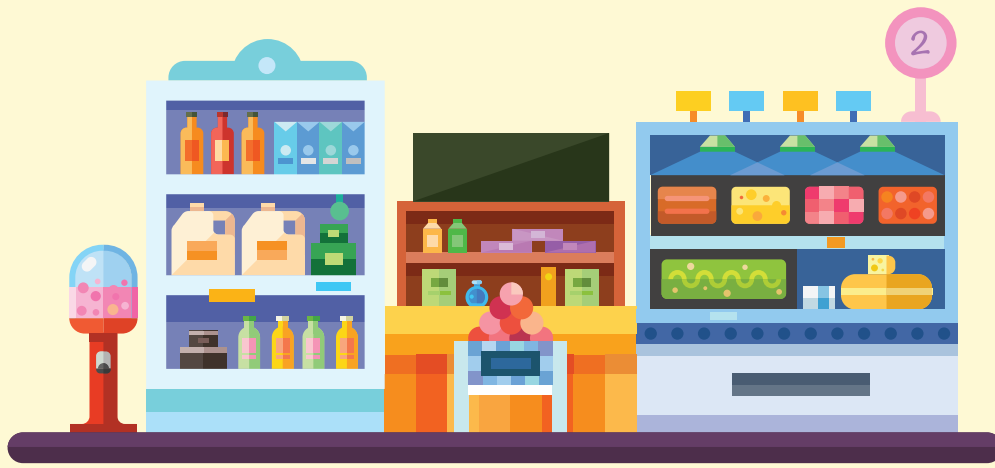


BETWEEN JULY 16' - JUNE 17' VOLUNTEERS DONATED

CRAZY!

**8,076 HOURS OF HELP  
VALUED AT \$242,603.00\***

\*value provided by the corporation for national and community service.



# FOOD BANK SERVICES

WE PROVIDED  
 4,871 FAMILIES  
 19,368 INDIVIDUALS  
 WITH  
 408,238 LBS OF FOOD!

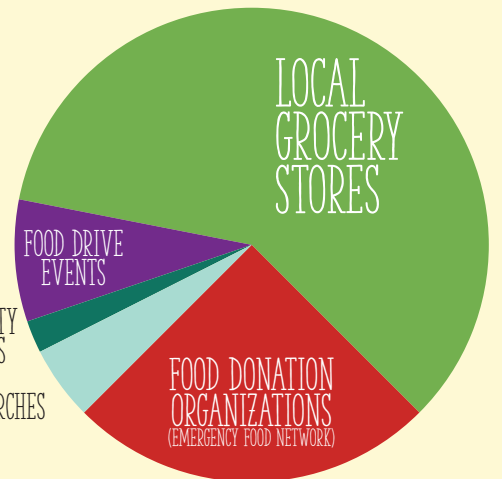


\*68% of all food bank families live within a 5-mile radius of our food bank location. Meaning that a overwhelming majority of donations go directly back to families in our community.



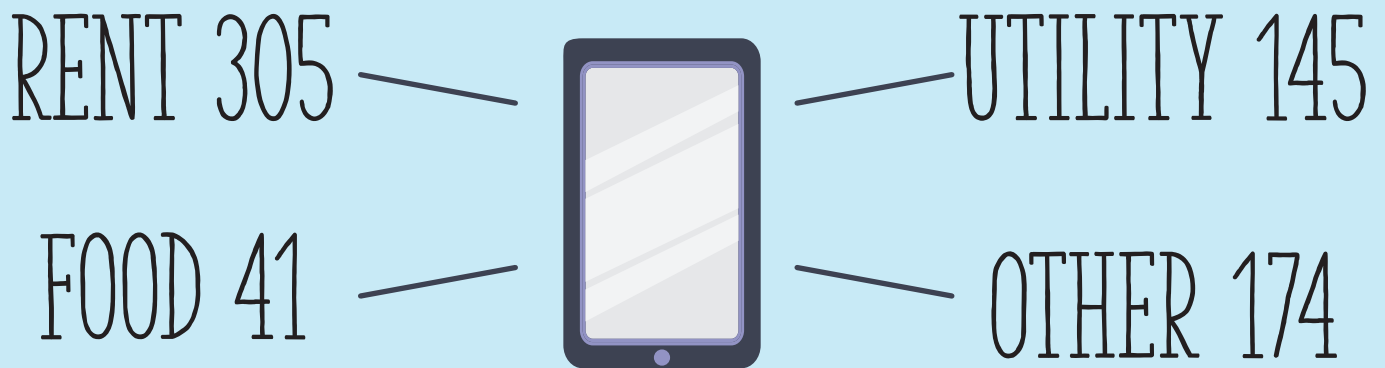
COMMUNITY GARDENS  
 CHURCHES

## WHO DONATED?





## FAMILY SERVICES



665 REQUESTS FOR SUPPORT

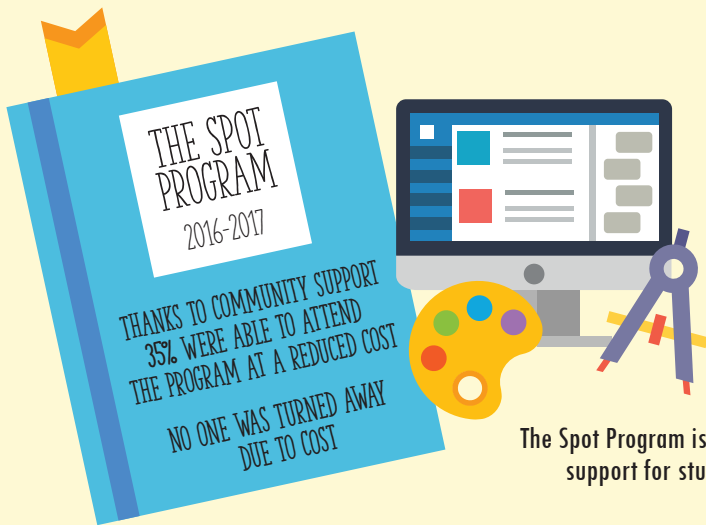
The Family Services program exists to help families through short and long term crisis. We provide a holistic approach to support to each family so that they can get the services that are best designed to see them find a place of self-sufficiency. Not every family helped through our program needs financial support. Many just need to talk to someone who can listen and provide practical advice.

WE PROVIDED  
62 FAMILIES  
WITH  
416 HOURS OF SUPPORT  
\$7,345 IN FINANCIAL SUPPORT





## YOUTH ORIENTED SERVICES



WE PROVIDED  
80 STUDENTS  
WITH  
14,400 TUTORING HOURS!

The Spot Program is a low cost, After-School Tutoring program that provides ongoing educational support for students in University Place. The Spot focuses on homework help, academic enrichment, and peer mentoring.

## BACKPACK PROGRAM

Since 2008 Families Unlimited Network has partnered with the University Place School District to provide and deliver easy-to-make meals for students to take home for the weekend throughout the entire school year. This program is completely volunteer ran thanks to our generous community partners. Special thanks to Church on the Sound for taking lead on this program and School Counselors for registering families throughout the whole year!



WE PROVIDED  
11,720 MEALS

# NEW SUMMER MEAL PROGRAM

Newly launched during the summer of 2017, Our Summer Meal Program was a huge success! After a year of planning and coordinating with the University Place School District, United Way Pierce County, Local Church Communities, and other youth-focused groups we launched our 10 week program! **Special thanks to Olympic View Baptist church for hosting the program this summer!**

## WE PROVIDED 743 MEALS



# BACK TO SCHOOL FAIR

This Annual Event brought in enough donations to support nearly 125 students in the University Place School District, thanks to the generous donations of many community partners. Extra school supplies are made available to the University Place School District all year!



## WE PROVIDED 86 BACKPACKS

# COMMUNITY CHRISTMAS

This event reflects full community collaboration! Families Unlimited Network acts as the “clearing-house” collecting names of families in need provided by counselors in the University Place School District. Families Unlimited Network provides those names to community groups looking to provide families gifts and treats during the holiday season! This ensures every family who has need is connected to those who want to give back to their community!

## WE SUPPORTED 133 FAMILIES

